

# APARTMENT 10 ONE BEDROOM

Well planned one-bed that is adapted for a disabled person throughout. Modern kitchen with all the conveniences. Bedroom with double bed and extra large bathroom with shower. Airy living room with sofa bed and dining area for 3-4 people. Adaptations can easily be changed to regular options.

## SUMMARY

- Total area 59 m<sup>2</sup>
- Incl. terrace 13 m<sup>2</sup>
- All furniture included
- Large bathroom
- Sofa bed
- Adapted for disabled resident

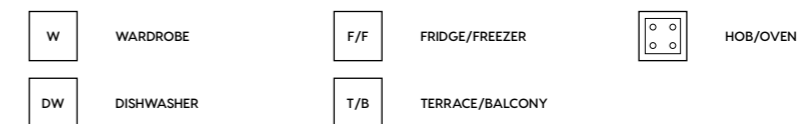
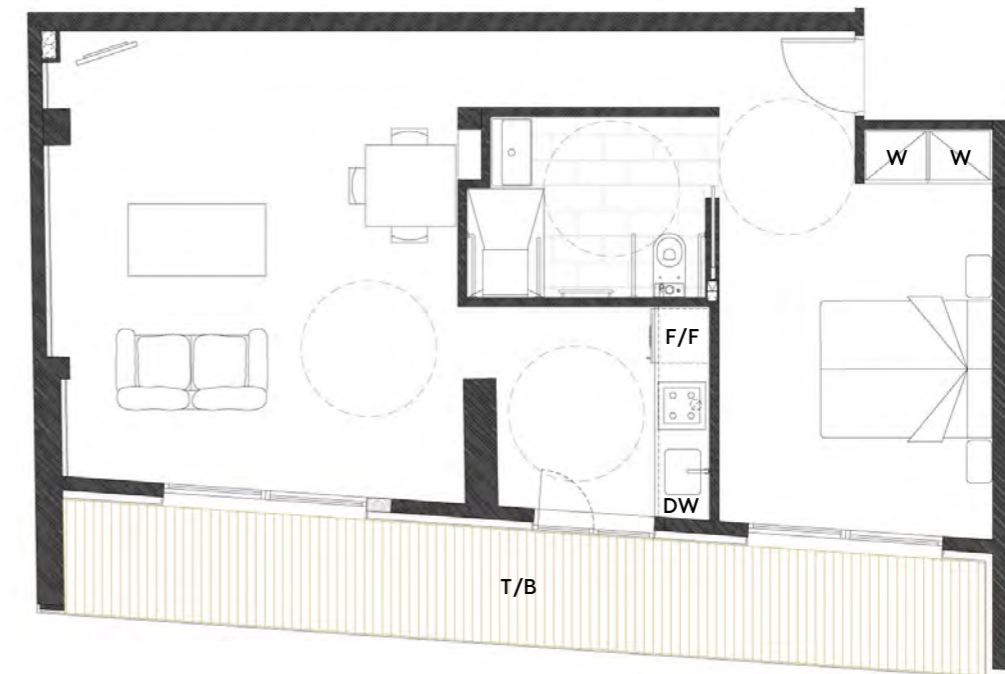
## CALCULATION

PRICE (Excl. agent's commission & taxes)	FEES /month (Maintenance & care)	DEPOSIT (30% of price)	INTEREST /month (2.5% interest)	MORTGAGE /month (30 year mortgage)	HOTEL REVENUE /month (At 60% occupancy)
€ 415 000	€ 317	€ 124 500	€ 605	€ 807	€ 1801

**N.B. When purchasing a home in Mallorca, there is a statutory one-off cost around 12% of the selling price that is made up of taxes, fees and the agent's commission.**

*The calculation is an example using assumed cash deposit, interest rate and mortgage details. Interest rates and other factors depend on the agreement reached via your banking contacts or ours. The cash deposit, interest rate and mortgage details depend on your personal circumstances. The revenue earned through the hotel rental scheme is estimated based on an average of the occupancy rate in Palma and, as such, offers no guarantees.*

## PLAN



## LOCATION

