

APARTMENT 2 TWO BEDROOMS

Spacious apartment with 2 double bedrooms. Modern and fully equipped kitchen in an open-plan layout, with a dining area for 4–6 people and living room with an inset balcony. Fully tiled bathroom with WC and shower.

SUMMARY

- Total area 68.5 m²
- Incl. balcony 4 m²
- All furniture included
- 2 bedrooms
- Dining area for 4–6 people
- Fully equipped kitchen

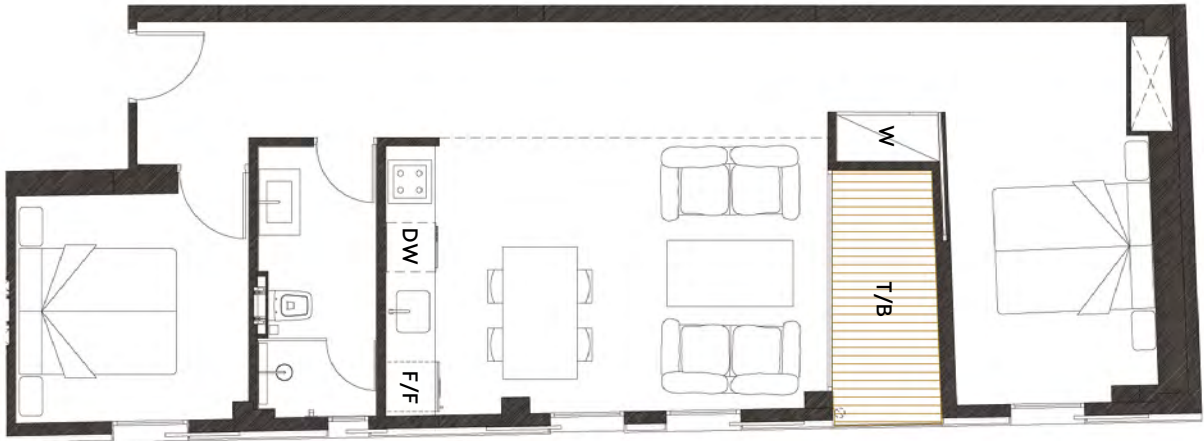
CALCULATION

PRICE (Excl. agent's commission & taxes)	FEES /month (Maintenance & care)	DEPOSIT (30% of price)	INTEREST /month (2.5% interest)	MORTGAGE /month (30 year mortgage)	HOTEL REVENUE /month (At 60% occupancy)
€ 437 000	€ 350	€ 131 100	€ 638	€ 850	€ 1 886

N.B. When purchasing a home in Mallorca, there is a statutory one-off cost around 12% of the selling price that is made up of taxes, fees and the agent's commission.

The calculation is an example using assumed cash deposit, interest rate and mortgage details.
Interest rates and other factors depend on the agreement reached via your banking contacts or ours.
The cash deposit, interest rate and mortgage details depend on your personal circumstances. The revenue earned through the hotel rental scheme is estimated based on an average of the occupancy rate in Palma and, as such, offers no guarantees.

PLAN



W	WARDROBE	F/F	FRIDGE/FREEZER		HOB/OVEN
DW	DISHWASHER	T/B	TERRACE/BALCONY		

LOCATION

