

APARTMENT 4 TWO BEDROOMS

Duplex apartment with 2 double bedrooms, one upstairs and one downstairs. Open-plan layout between kitchen and living room. The terrace is accessed via the upstairs bedroom. Fully tiled bathroom with WC and shower.

SUMMARY

- Total area 88.5 m²
- Incl. terrace 14 m²
- All furniture included
- 2 bedrooms
- Duplex
- Fully equipped kitchen

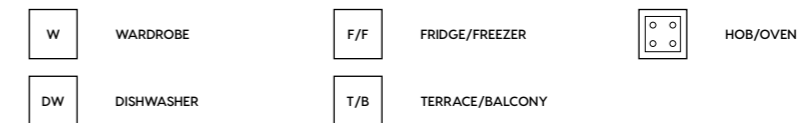
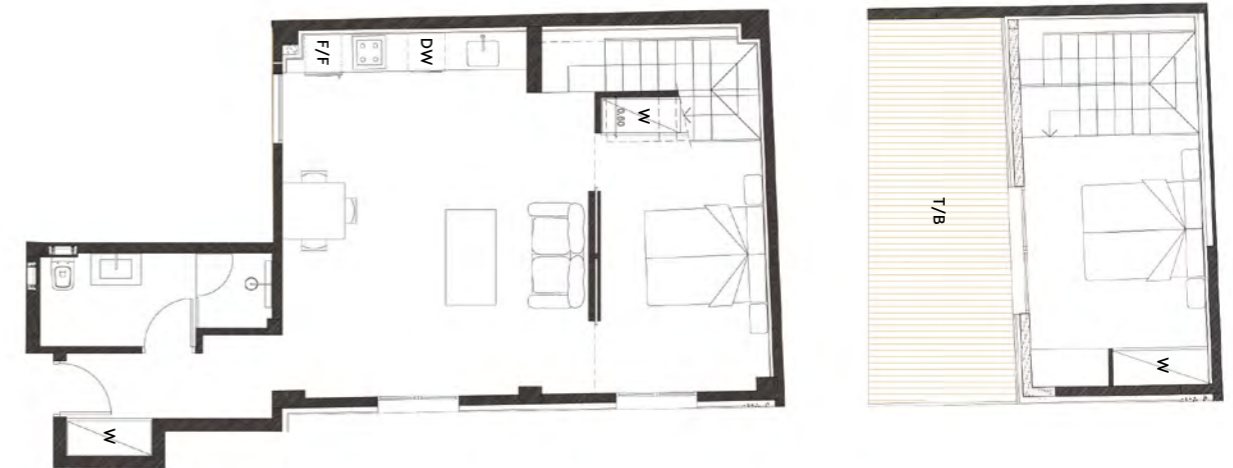
CALCULATION

PRICE (Excl. agent's commission & taxes)	FEES /month (Maintenance & care)	DEPOSIT (30% of price)	INTEREST /month (2.5% interest)	MORTGAGE /month (30 year mortgage)	HOTEL REVENUE /month (At 60% occupancy)
€ 580 000	€ 430	€ 174 000	€ 846	€ 1 128	€ 2 001

N.B. When purchasing a home in Mallorca, there is a statutory one-off cost around 12% of the selling price that is made up of taxes, fees and the agent's commission.

The calculation is an example using assumed cash deposit, interest rate and mortgage details. Interest rates and other factors depend on the agreement reached via your banking contacts or ours. The cash deposit, interest rate and mortgage details depend on your personal circumstances. The revenue earned through the hotel rental scheme is estimated based on an average of the occupancy rate in Palma and, as such, offers no guarantees.

PLAN



LOCATION

