

# POMO HOUSE

PORTIXOL/MOLINAR OCEAN VIEW HOUSE

**HEMI & PARTNERS**

# POMOHOUSE

PORTIXOL/MOLINAR OCEAN VIEW HOUSE

## Twin house with a twist

Welcome to PoMo House - our ocean view twin house retreat in the crossroads of Portixol and Molinar, by the outskirts of Palma de Mallorca.

This unique project is the perfect escape for those who seek a serene horizon backdrop to a discerning lifestyle. The ideal ocean close location gives you the option to take full advantage of the cool sea breeze that wafts through the roof terrace.

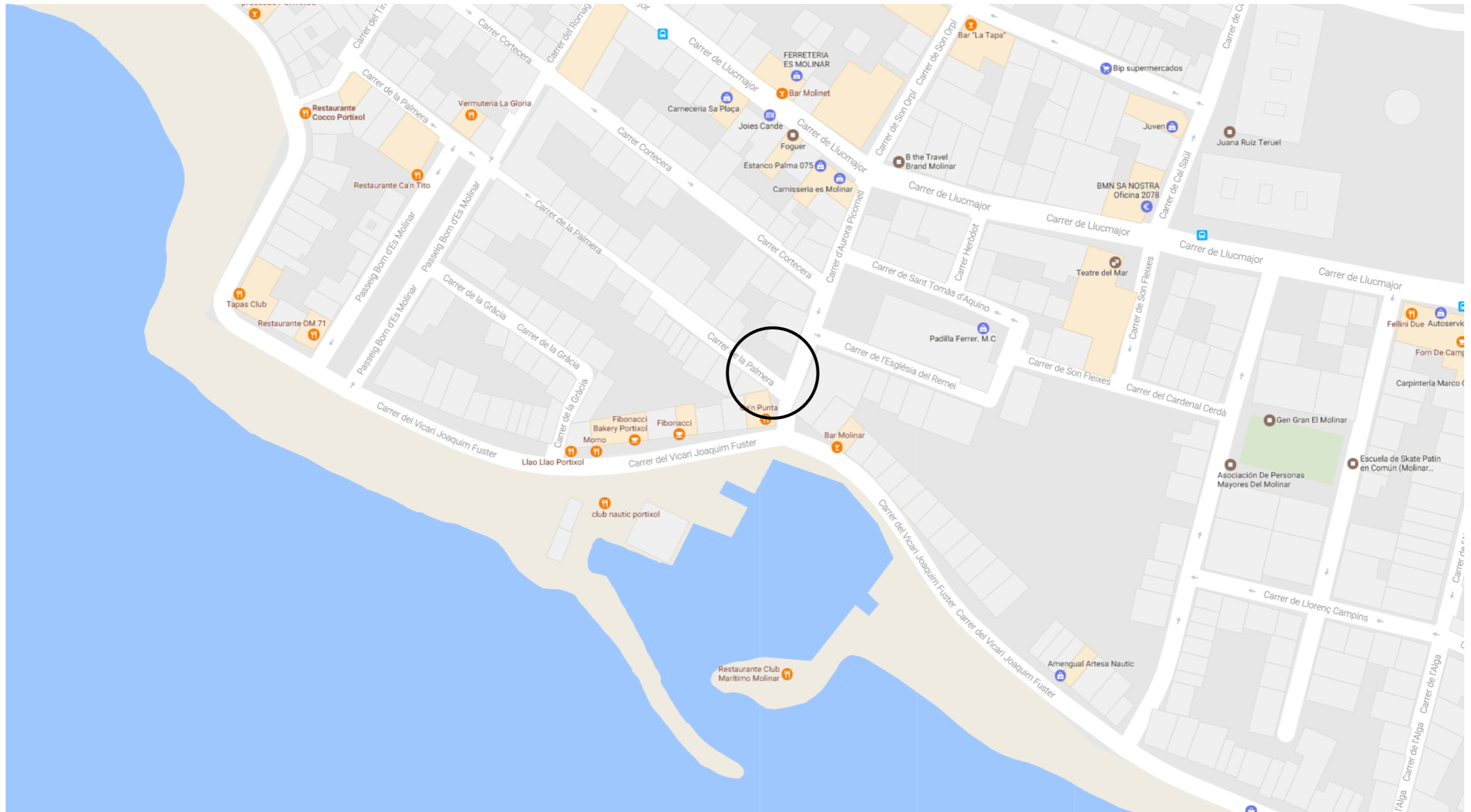
PoMo House is under construction and will be finished in fall 2018.



**HEMI & PARTNERS**







Pomo House - located at a super prime location in popular Portixol/Molinar

# POMOHOUSE

PORTIXOL/MOLINAR OCEAN VIEW HOUSE

PomoHouse is not a single standing home and it's not a house with cramped up condos - it's the epiphany of living relaxed and carefree in a beach oriented community.

Some of the façade's characteristics:

- Classic style exterior
- Wooden window frames
- Crafted ironwork
- High quality materials



**HEMI & PARTNERS**

# Facade Inspiration



# The surroundings



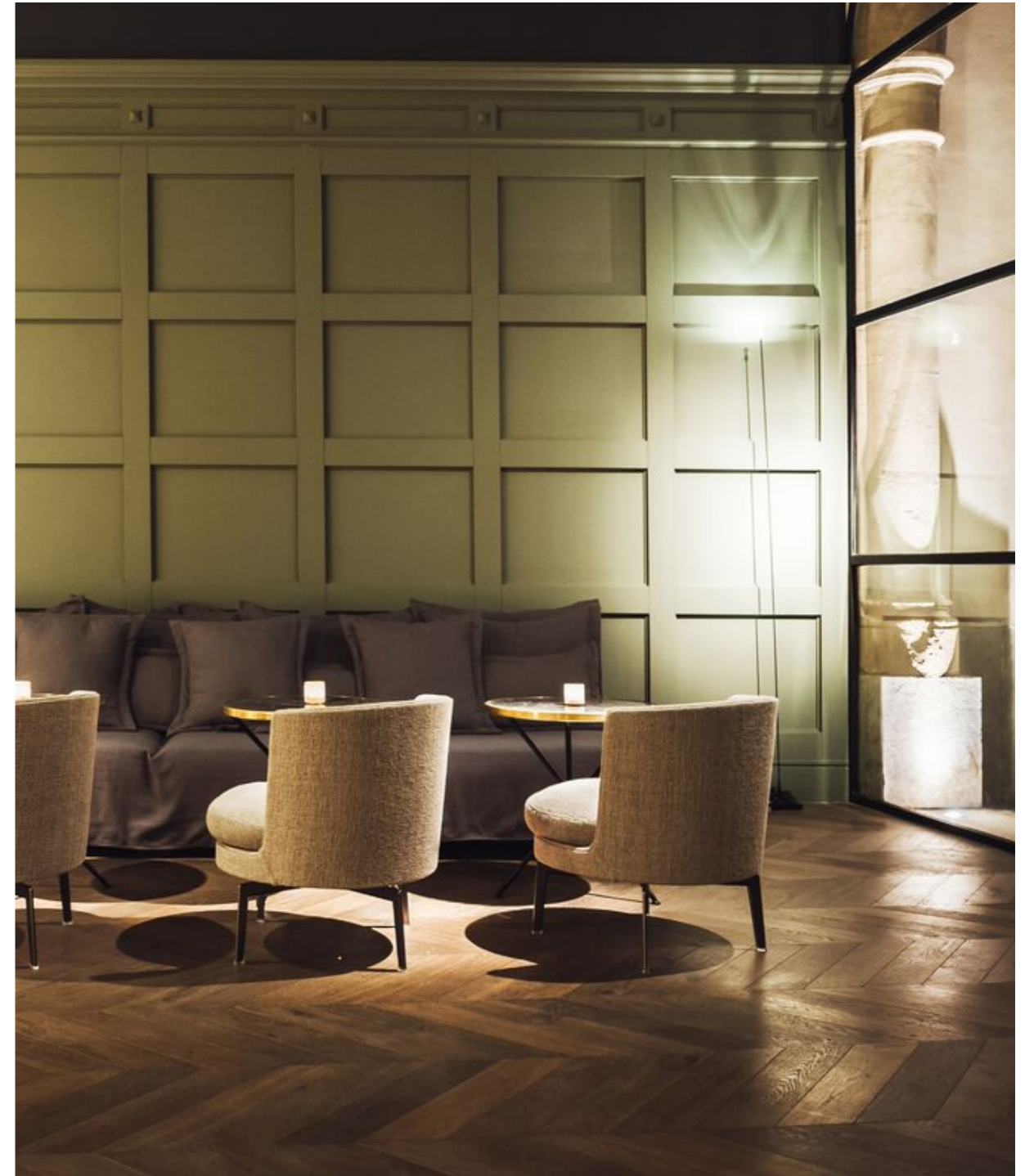


# POMOHOUSE

PORTIXOL/MOLINAR OCEAN VIEW HOUSE

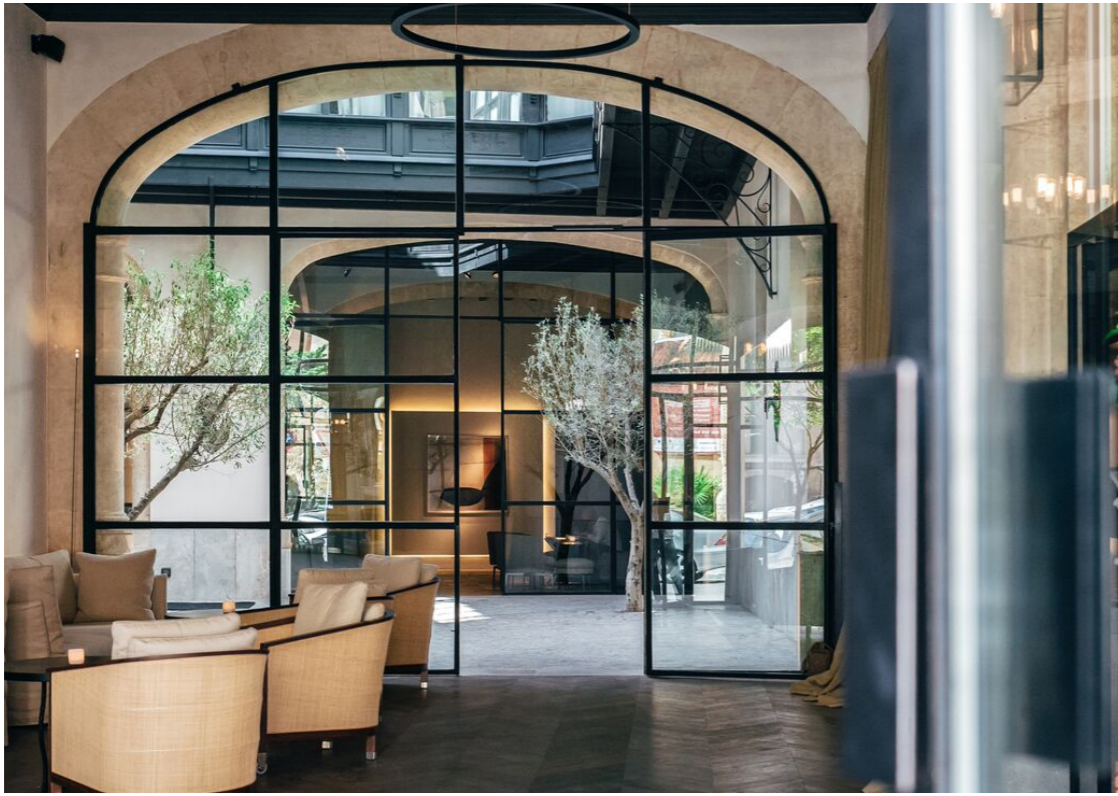
## 260 sqm of lifestyle

- Duplex house inspired by stylish boutique hotels
- Three floors, garage and terraces with pool
- Up to four bedrooms with ensuite bathrooms
- Spacious living room area with open kitchen
- Basement with option for wine cellar/gym/etc
- Highest standards and natural materials
- Finished in fall 2018, possible to customize



**HEMI & PARTNERS**

# Living room inspiration



# POMOHOUSE

PORTIXOL/MOLINAR OCEAN VIEW HOUSE

## Open space living area

- Connected kitchen with living room
- 3,3 meters ceiling
- Classic beams
- Custom made kitchen
- Natural materials



# Kitchen inspiration



# POMOHOUSE

PORTIXOL/MOLINAR OCEAN VIEW HOUSE

## Beyond just a bedroom

- Boutique-hotel style bedrooms
- Ensuite bathrooms
- Built in wardrobes
- Oak floors
- Underfloor heating



**HEMI & PARTNERS**

# Bedroom inspiration



# POMOHOUSE

PORTIXOL/MOLINAR OCEAN VIEW HOUSE

## Bathrooms to die for

- Tiled with natural stones
- Modern bathtubs and showers
- Underfloor heating
- Custom made
- Natural materials



**HEMI & PARTNERS**

# Bathroom inspiration





# POMOHOUSE

PORTIXOL/MOLINAR OCEAN VIEW HOUSE

## A sun drenched roof top

- 87 sqm large terrace
- Panoramic views
- Mosaic pool
- Natural stone flooring
- Special outdoor kitchen



**HEMI & PARTNERS**

# Terrace inspiration



# POMOHOUSE

PORTIXOL/MOLINAR OCEAN VIEW HOUSE

## Basement with a potential

- Large living area with great potential, such as:
  - A modern wine cellar
  - State of the art home gym
  - At home cinema experience

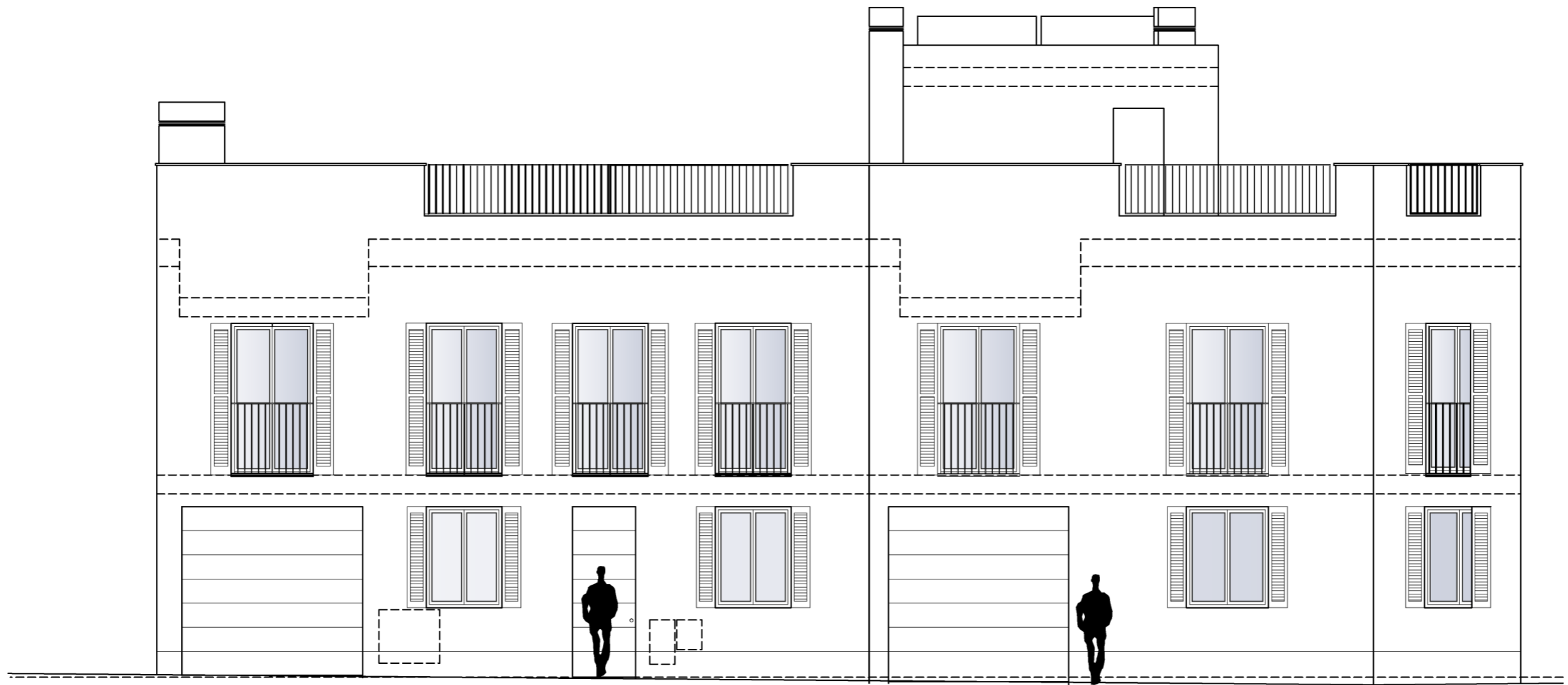


HEMI & PARTNERS

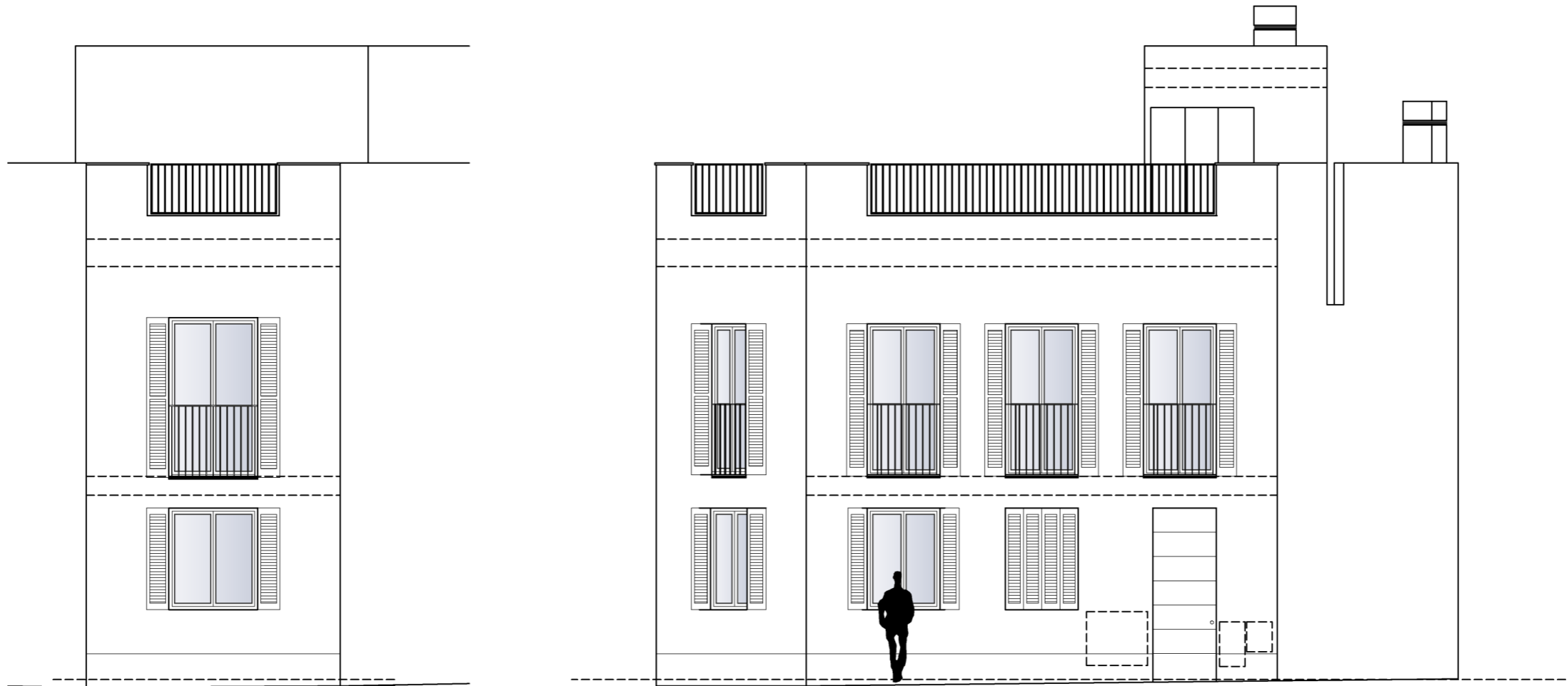
# Basement inspiration



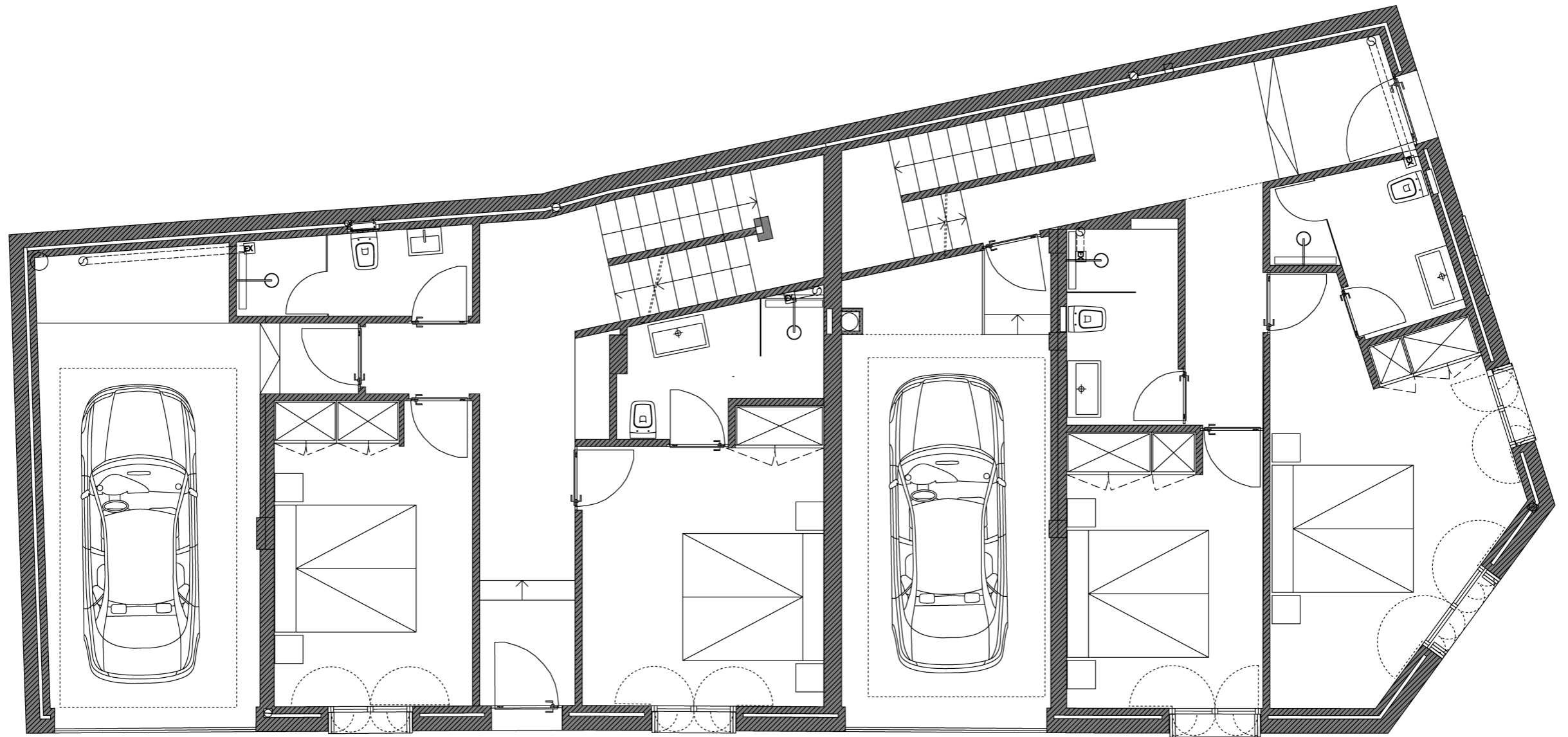
# Facade/exterior



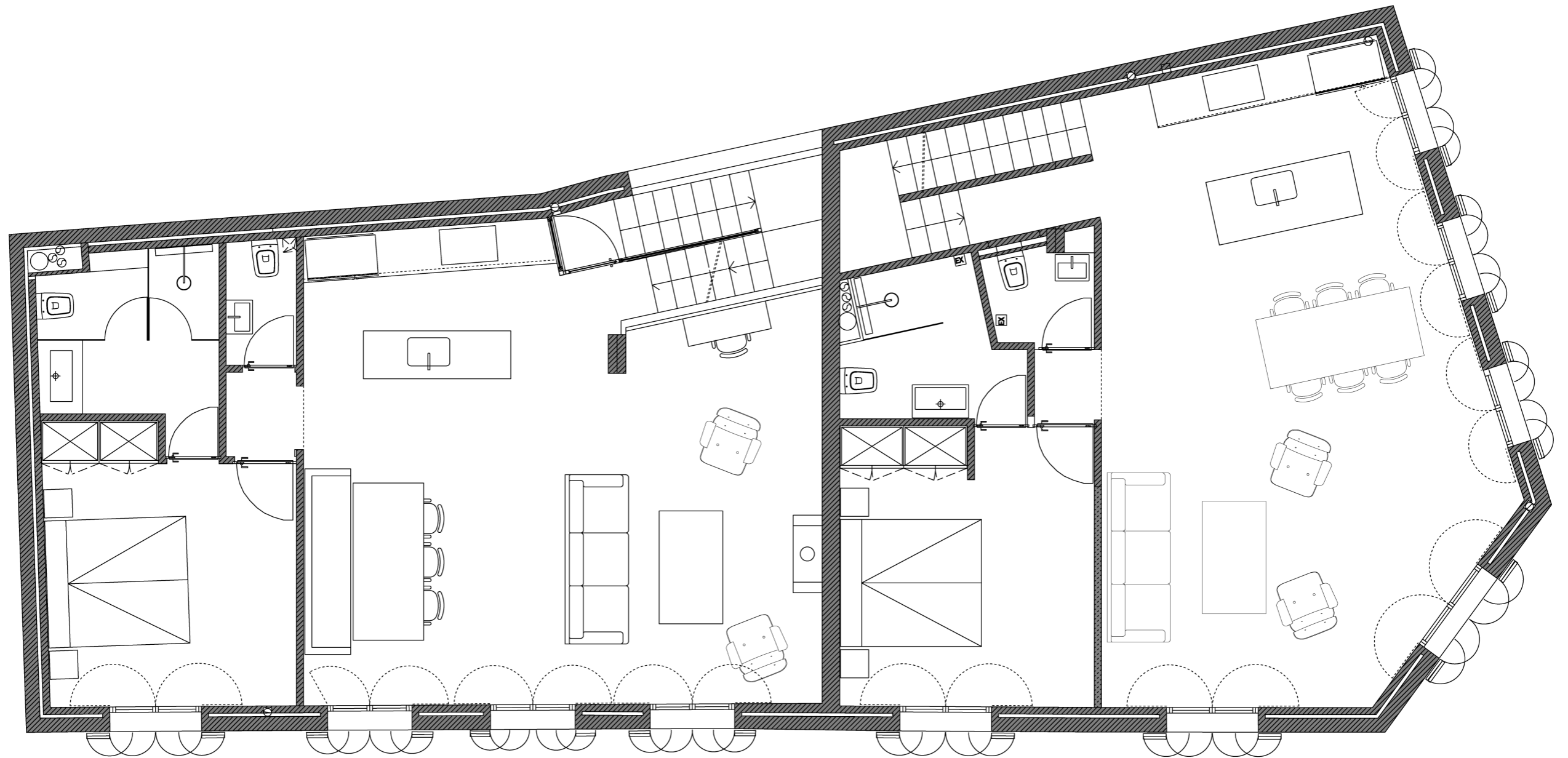
# Facade/exterior



# Ground floor/entrance

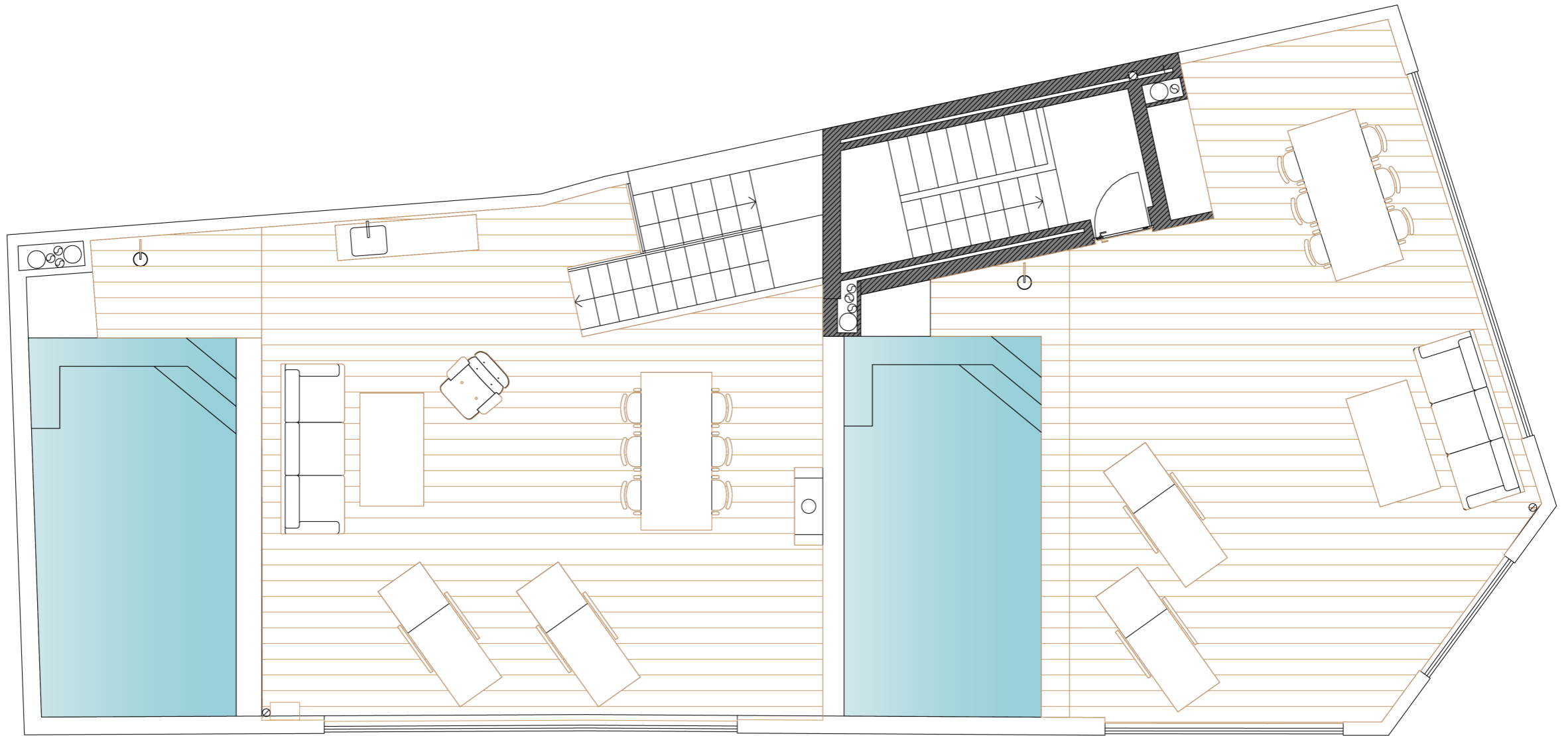


# Second floor

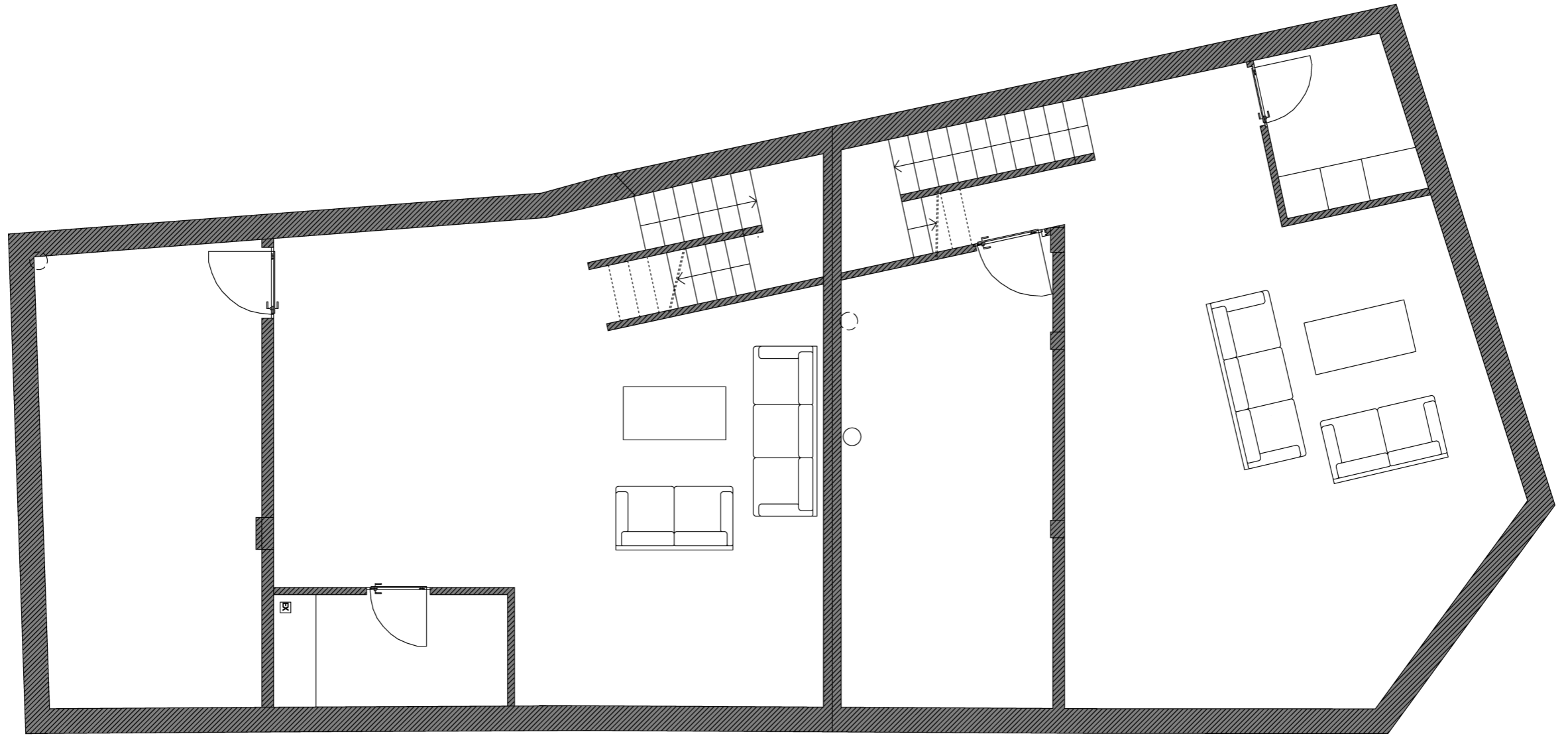




# Terrace/roof top



# Basement



# POMOHOUSE

PORTIXOL/MOLINAR OCEAN VIEW HOUSE

## Contact & Sales

PROPERTY DEVELOPER  
Hemi & Partners  
[www.hemi-partners.com](http://www.hemi-partners.com)

ARCHITECT  
Islabau Constructora

BUILDER  
Canyaveral + Fontes



**HEMI & PARTNERS**