



# VILLA VENTURA

*Mediterranean living at its best.*

# VILLA VENTURA

*Hemi & Partners has transformed a 1910s townhouse in Palma into a contemporary family home. The dwelling is named Villa Ventura and located in the old town of Palma - an affluent and diverse neighborhood at the immediate proximity of the 16th century Cathedral.*



# A Secluded Town House In The Heart Of Palma



Your Own House  
In Palma's Old Town



Front & Rear Access  
With Private Parking

# VILLA VENTURA

*The Townhouse is vertically organized across three distinct storeys - functional service spaces and gym at ground level, with family living accommodation above. The uppermost floor features a roof garden with a pool that serves as a secluded retreat from the bustling city of Palma.*



HEMI & PARTNERS

# Design Finishes - Terrace

## *POOL*

*Mosaic pool*

*Out door shower*

*Swimming pool led lights*

## *FLOOR*

*Light sandstone*

## *RAILING*

*Black iron railing*

## *OUTDOOR KITCHEN*

*Miele cooler*

*Work top and splash back in natural stone*

*Tapwell faucet & custom made cabinets*

## *LIGHT*

*Outdoor led lights*

*We reserve the right to replace products and/or finishes with equivalents in terms of functionality and design.*





HEMI & PARTNERS



HEMI & PARTNERS

# General Interior Design Finishes

## *FLOOR*

*Chevron pattern oak (indoor)*

*Light sandstone (entrance)*

## *WALLS*

*Painted walls, warm white*

*Profiled wall paneling, warm light grey*

## *CEILING*

*White wooden beams (living room)*

*Painted ceiling, warm white*

## *GENERAL LIGHT*

*Beam strip light (living room)*

*Recessed ceiling light*

## *WARDROBES*

*Cabinet doors with profile,*

*warm light grey*

## *BALCONY DOORS & WINDOWS*

*Wooden frame doors*

## *RAILINGS*

*Black iron railings*

## *INDOOR STAIRCASES*

*Oak staircase*

*Black iron rails*

*Inbuilt led lightning*

*We reserve the right to replace products and/or finishes with equivalents in terms of functionality and design.*



HEMI & PARTNERS

# Interior Design Finishes - Kitchen

## *KITCHEN CABINETS*

*Custom build, high standard*

*Matte lacquer finish*

## *WORKTOP & FAUCET*

*Work top and splash back in natural stone*

*Tapwell Faucet*

## *APPLIANCES*

*Miele home appliances*

## *LIGHTING*

*Recessed ceiling light*

*Led light*

*We reserve the right to replace products and/or finishes with equivalents in terms of functionality and design.*

# VILLA VENTURA

*Enjoy this four bedroom townhome tucked away in a secluded part of the Old Town community in Palma. The three story property offers Mediterranean living at its best. A spacious great room provides plenty of living space and connects to a full kitchen with custom made cabinets and state-of-the-art appliances.*



HEMI & PARTNERS

# Furniture, Machines & Technology Included

## *DINING*

*Table with chairs*

*Pendant light*

## *LIVING ROOM*

*Sofa and coffee table*

*Armchairs*

*Wall to wall carpet*

*Floor lamps*

## *BEDROOM*

*Hotel beds with linen*

*Walk in closet*

## *GYM*

*Weight Machines*

## *TECHNOLOGY*

*Wifi*

*Alarm*

*Intercom system*

## *HEATING / AC*

*Waterborne underfloor heating*

*Air conditioning*

*We reserve the right to replace products and/or finishes with equivalents in terms of functionality and design.*





HEMI & PARTNERS

# Interior Design Finishes - Bathroom

## *FLOOR*

*Bricmate tiles, light grey or beige*

## *WALLS*

*Bricmate tiles, light grey or beige*

## *CEILING*

*Painted ceiling, warm white*

## *WASHBASIN*

*Natural stone basin*

## *FIXTURES AND FITTINGS*

*Chrome metal finish*

*Tapwell shower columns and mixers*

## *LIGHT*

*Recessed ceiling light*

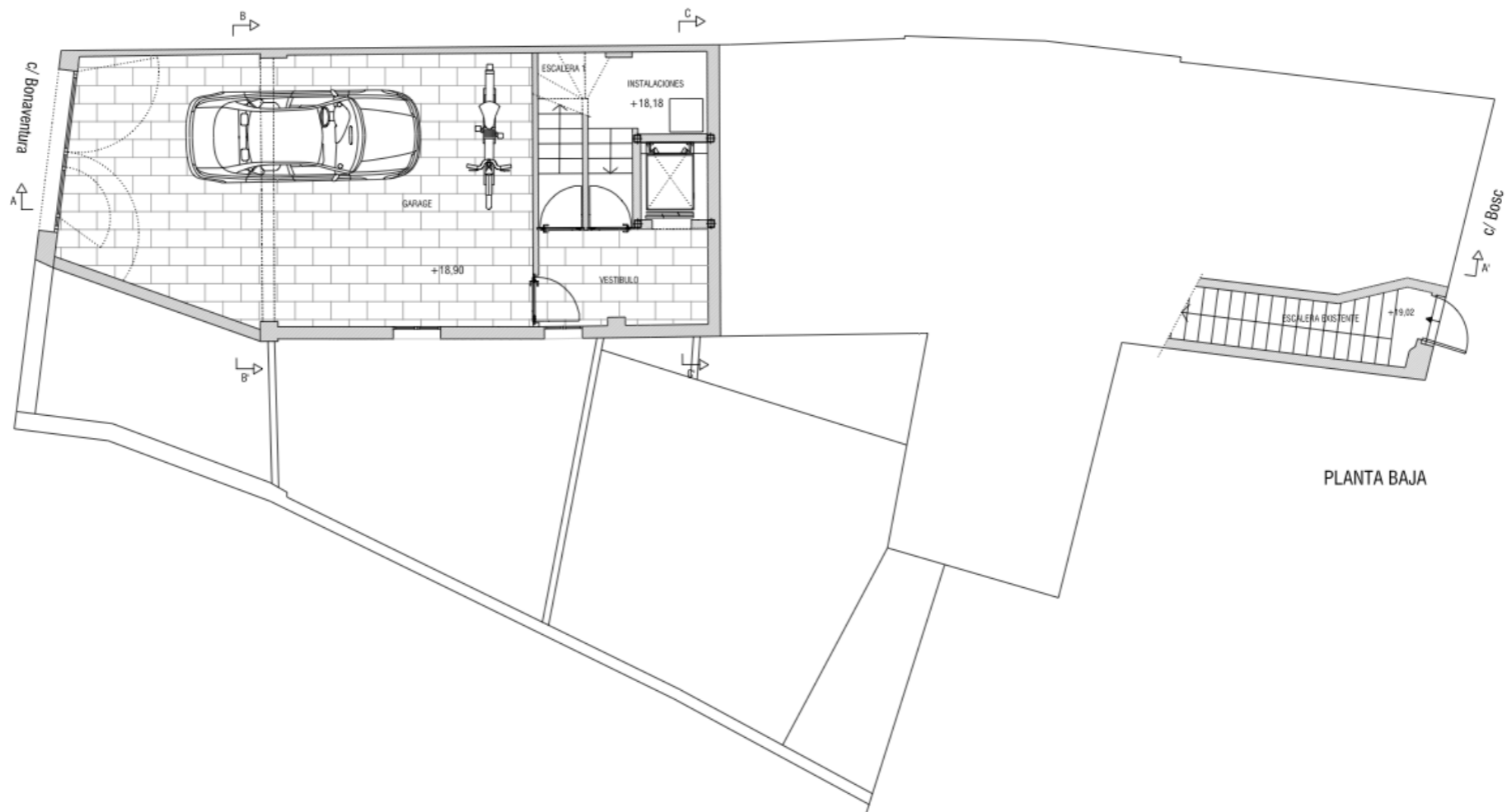
*We reserve the right to replace products and/or finishes with equivalents in terms of functionality and design.*

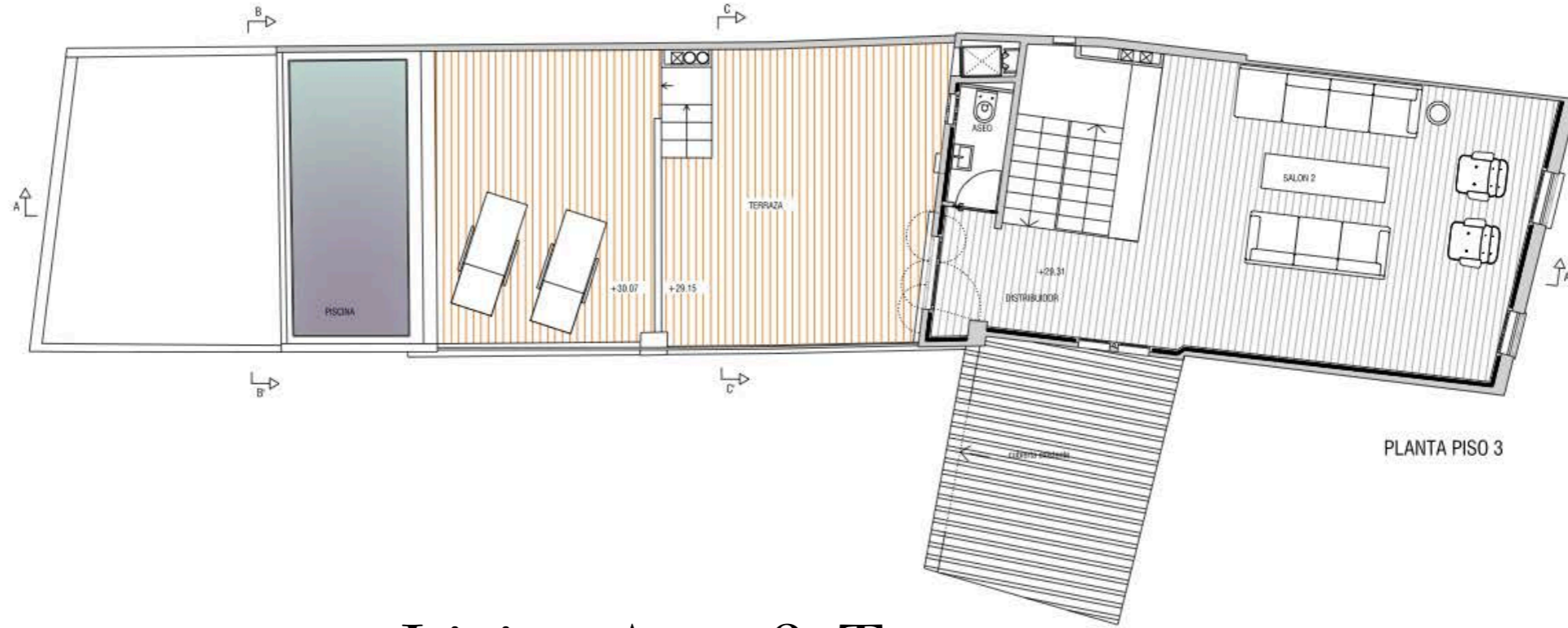


# The Blueprints Floor By Floor

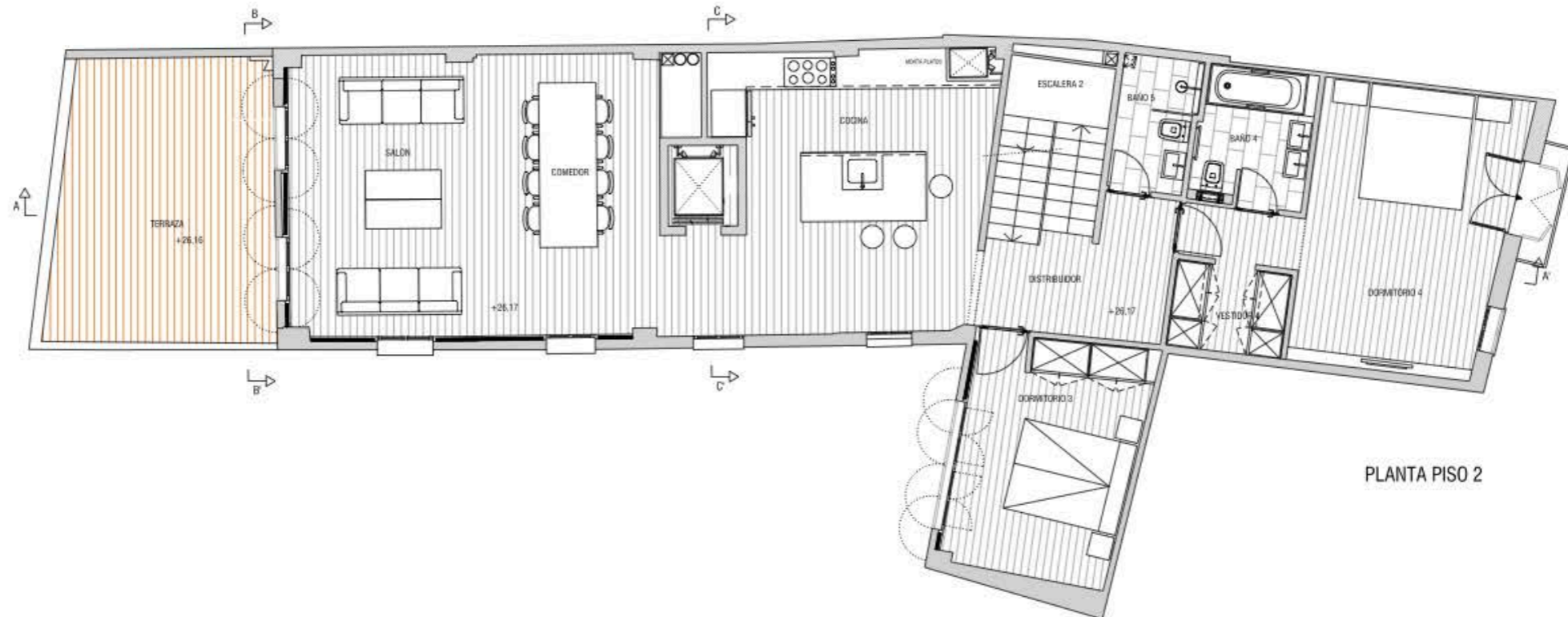


# Ground & Basement

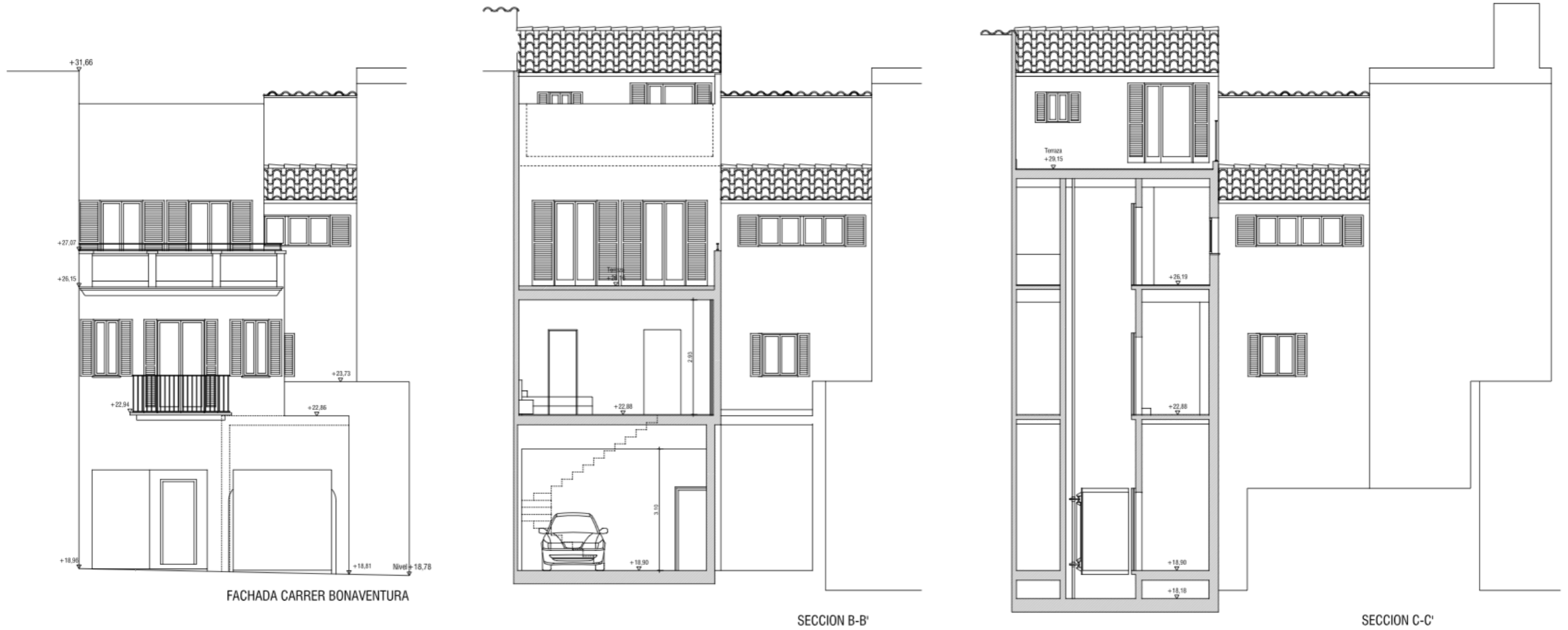




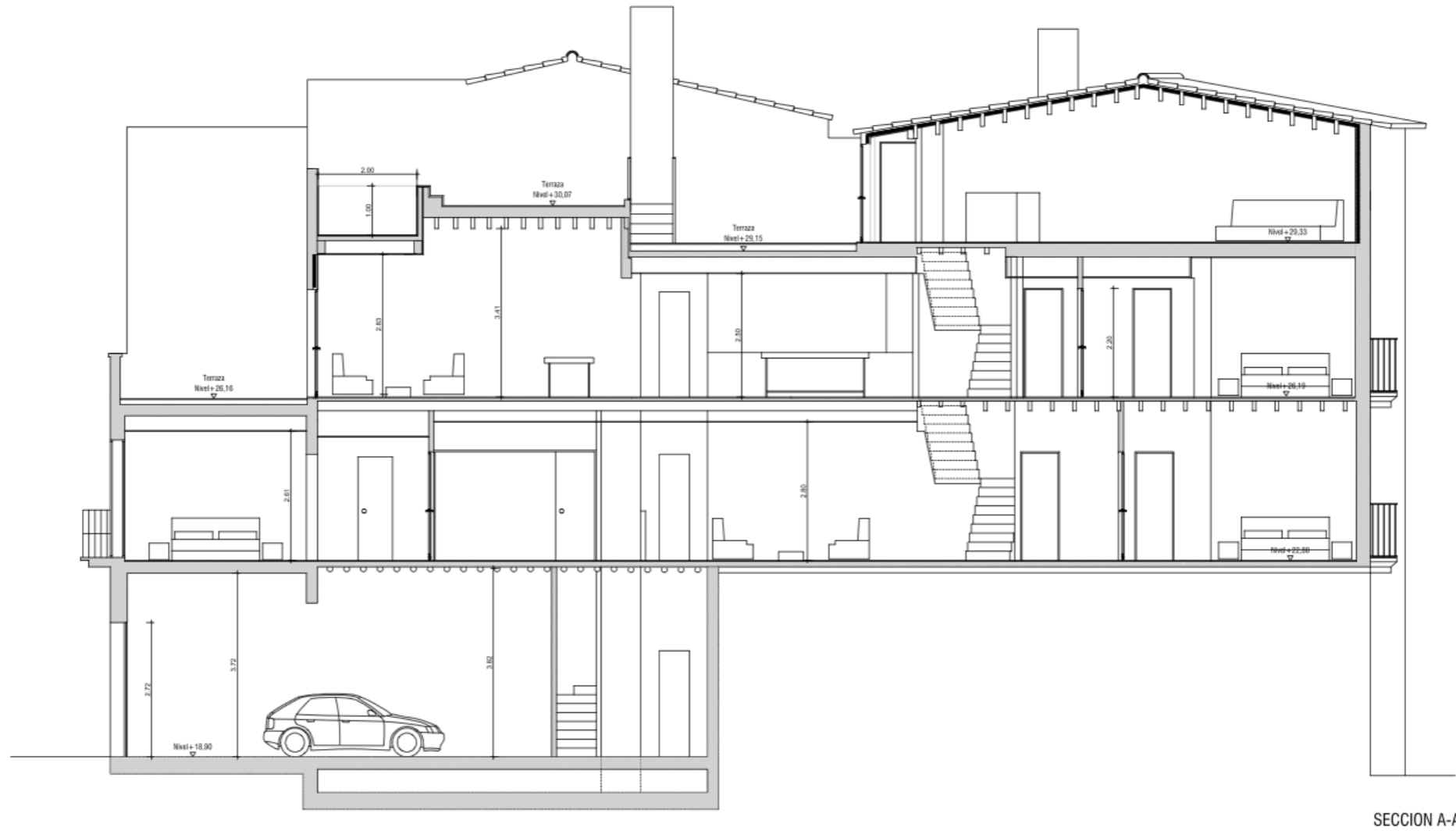
# Living Area & Terrace



# The Facade - Front View



# The Facade - Side View



SECCION A-A'



## Secluded Tranquility In The Heart Of Palma



# VILLA VENTURA

PROPERTY DEVELOPER

*Hemi & Partners*

[www.hemi-partners.com](http://www.hemi-partners.com)

ARCHITECT

*Canyaveral + Fontes*

BUILDER

*Islabau Constructora*